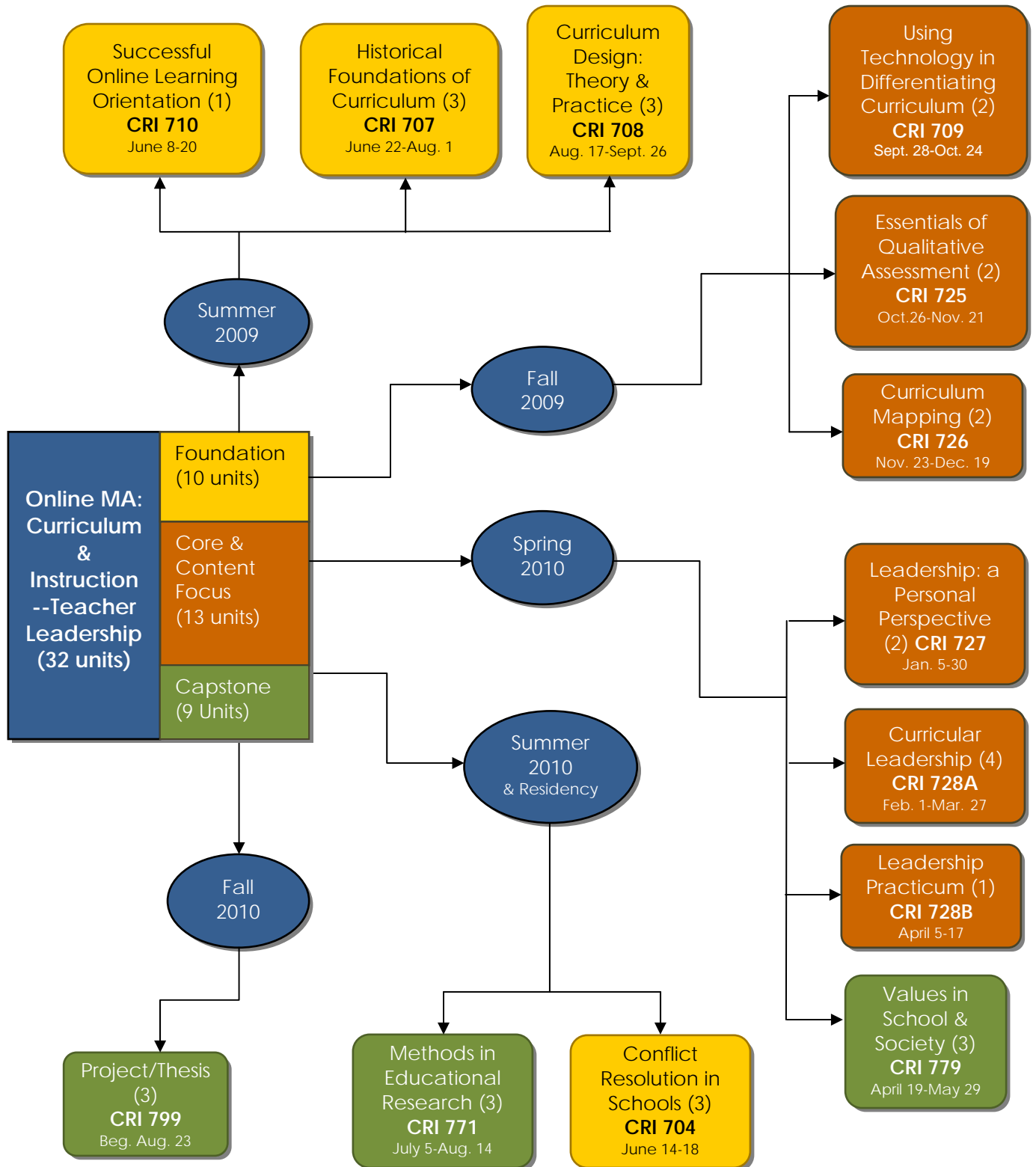


Curriculum and Teaching Online (FONX) Course Schedule (09/10 Cohort)



Curriculum and Teaching Online Calendar Sequence

June 2009						
S	M	T	W	T	F	S
		1	2	3	4	5
6	7	8	9	10	11	12
13	14	15	16	17	18	19
20	21	22	23	24	25	26
27	28	29	30	31		

CRI 710/CRI 707

July 2009						
S	M	T	W	T	F	S
			1	2	3	4
5	6	7	8	9	10	11
12	13	14	15	16	17	18
19	20	21	22	23	24	25
26	27	28	29	30	31	

CRI 707

August 2009						
S	M	T	W	T	F	S
						1
2	3	4	5	6	7	8
9	10	11	12	13	14	15
16	17	18	19	20	21	22
23	24	25	26	27	28	29
30	31					

CRI 708

September 2009						
S	M	T	W	T	F	S
		1	2	3	4	5
6	7	8	9	10	11	12
13	14	15	16	17	18	19
20	21	22	23	24	25	26
27	28	29	30			

CRI 708/CRI 709

October 2009						
S	M	T	W	T	F	S
				1	2	3
4	5	6	7	8	9	10
11	12	13	14	15	16	17
18	19	20	21	22	23	24
25	26	27	28	29	30	31

CRI 709/CRI 725

November 2009						
S	M	T	W	T	F	S
1	2	3	4	5	6	7
8	9	10	11	12	13	14
15	16	17	18	19	20	21
22	23	24	25	26	27	28
29	30					

CRI 725/CRI 726

December 2009						
S	M	T	W	T	F	S
		1	2	3	4	5
6	7	8	9	10	11	12
13	14	15	16	17	18	19
20	21	22	23	24	25	26
27	28	29	30	31		

CRI 726

January 2010						
S	M	T	W	T	F	S
					1	2
3	4	5	6	7	8	9
10	11	12	13	14	15	16
17	18	19	20	21	22	23
24	25	26	27	28	29	30
31						

CRI 727

February 2010						
S	M	T	W	T	F	S
	1	2	3	4	5	6
7	8	9	10	11	12	13
14	15	16	17	18	19	20
21	22	23	24	25	26	27
28						

CRI 728A

March 2010						
S	M	T	W	T	F	S
	1	2	3	4	5	6
7	8	9	10	11	12	13
14	15	16	17	18	19	20
21	22	23	24	25	26	27
28	29	30	31			

CRI 728A

April 2010						
S	M	T	W	T	F	S
				1	2	3
4	5	6	7	8	9	10
11	12	13	14	15	16	17
18	19	20	21	22	23	24
25	26	27	28	29	30	

CRI 728B/CRI 779

May 2010						
S	M	T	W	T	F	S
						1
2	3	4	5	6	7	8
9	10	11	12	13	14	15
16	17	18	19	20	21	22
23	24	25	26	27	28	29
30	31					

CRI 779

June 2010						
S	M	T	W	T	F	S
		1	2	3	4	5
6	7	8	9	10	11	12
13	14	15	16	17	18	19
20	21	22	23	24	25	26
27	28	29	30			

CRI 704 in Residence

July 2010						
S	M	T	W	T	F	S
				1	2	3
4	5	6	7	8	9	10
11	12	13	14	15	16	17
18	19	20	21	22	23	24
25	26	27	28	29	30	31

CRI 771

August 2010						
S	M	T	W	T	F	S
1	2	3	4	5	6	7
8	9	10	11	12	13	14
15	16	17	18	19	20	21
22	23	24	25	26	27	28
29	30	31				

CRI 771/CRI 799 Max 3 sem

- Is an online program, with a one week summer residency in 2010.
- Each cohort geared for a maximum of 15 – 20 students.

Note: Boxes indicate streaming video orientation and summer residency.

Curriculum and Teaching Online Course Descriptions

CRI 710 Successful Online Learning Orientation (1)

Successful Online Learning Orientation prepares potential or beginning online learners with the knowledge and tools to successfully navigate the virtual learning environment. This course will specifically orient Fresno Pacific University online students with the tools and resources needed for their online masters degree program. Participants will learn to access and interact with course materials and through *Moodle*, the learning management system used by Fresno Pacific University, including *LiveText*, a web-based assessment tool. Principles of information literacy will be covered along with the use of relevant software applications.

CRI 707 Historical Foundations of Curriculum (3 units)

This course analyses the multicultural forces that influence curriculum and instruction: philosophy, psychology, pedagogy/learning, sociology, knowledge, and evaluation. Major approaches to curriculum and instruction are compared/contrasted with analysis of assumptions about teaching and learning inherent in specific curriculum practices and assessment procedures.

CRI 708 Curriculum Design: Theory and Practice (3 units)

This course focuses on the theory and practice of curriculum design and implementation, aligning with appropriate state-adopted content standards. It examines principles of human learning, identifies effective strategies for teaching to the diversity in the classroom (English learners, special populations), and incorporates strategic methods of differentiating for the success of all learners. It will review various methods of assessment, analyzing how they inform the teaching/learning experience, and continually reflecting on each candidate's ongoing practice.

CRI 709 Using Technology in Differentiating Curriculum (2 units)

This course provides an advanced look at the theory, design and implementation of differentiated curriculum. Strategies and tools for responsive teaching are researched, used and reflected upon. Technology is used as a major vehicle to differentiate both content and process. Candidates will apply data driven decision making and plan remediation activities. They will design technology enhanced lessons for diverse students. They will create and design an interactive webquest. Projects are field-based, inquiry-oriented and require significant reflection of the effectiveness of both the process and product.

CRI 725 Essentials of Qualitative Assessment (2 units)

This course is an introduction to theory and practice of qualitative assessment. It promotes an interactive look at classroom-based assessment tasks, ranging from short and specific to lengthy and substantive. It examines and incorporates examples of student projects as well as an array of effective assessment tools.

CRI 726 Curriculum Mapping (2 units)

This course introduces the process for creating and working with curriculum maps, using them as an effective tool for improving teaching and learning. A central focus will be on 'essential questions' and making the connections between content, standards, and assessment measures that reflect the diversity of the classroom. Mapping strategies will be developed for the individual teacher or for the block/ department setting.

CRI 727 Leadership: A Personal Perspective (2 units)

This course provides individuals with tools to analyze and reflect on their personal and professional lives. Specific, values-oriented assessments are used to raise self awareness, understand leadership styles and enhance professional development. Connections to how personal style informs abilities for leading organizational change are highlighted.

CRI 728A Curricular Leadership (4 units)

This course takes a look at the big picture of education and considers the role of each of the players involved. It examines the process of change and the elements needed for effective leadership. Current trends in curriculum development are identified and learning as inquiry is examined.

CRI 728B Leadership Practicum (1 unit)

This practicum is an application of the principles and concepts gleaned in Curricular Leadership.

CRI 704 Conflict Resolution in Schools (3 units)

This course will familiarize students with the structure, dynamics, role and challenge of conflict in schools. Special emphasis will be given to developing strategies and structures to promote cooperative and constructive resolution of conflict.

CRI 771 Research Methods in Education (3 units)

A study of the nature of systematic inquiry, a survey of methods employed in research and an explanation of evaluation methodology, as well as the use of research and evaluation methods in actual school situations. Topics include identification of educational research problems, use of library resources, data gathering and processing and evaluation of research articles.

CRI 779 Values in School and Society (3 units)

This course focuses on a cultural, historical, philosophical and/or social analysis of schools and schooling as a basis for developing an understanding of the educator's role as a change agent and as a basis for personal and professional decision making. The university's philosophy and values as expressed in the Fresno Pacific Idea and their implications for schools and society will provide one perspective for such analysis.

CRI 799 Project/Thesis – Curriculum and Teaching (3 units)

Supervised project/thesis in the field of curriculum and teaching. Instruction is tutorial and will result in a completed project/thesis.